

# Sub-Contract Reverse Engineering

## 3D Reverse Engineering

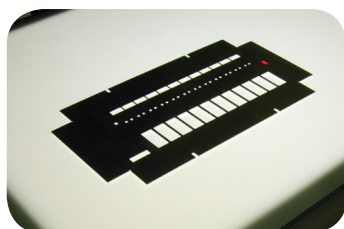
- In a few minutes, we can scan the visible surfaces of almost any 3D part to create a surface mesh. This surface mesh can be loaded directly into a 3D CAD package such as Solidworks, Catia or Creo/Pro-E and used as scaffolding to create a solid model.
- Our engineers can create the solid model for you, using advanced filtering and fitting techniques.
- Our scanners can also capture the surface texture of an object, which can be useful for archiving and preservation.

## 2D Reverse Engineering

- In a few seconds, we can reverse engineer most parts into a clean DXF which can be used to laser-cut a copy of the part.
- Alternatively filtering and snapping algorithms can be used to make the perfect DXF from an imperfect part.
- We can reverse engineer from paper drawings, image files (jpegs/bmps/etc) or pdf files.
- Our smaller 2D scanners are portable and have an accuracy of better than 12 microns. Our large scanners can measure parts up to 6m in size.

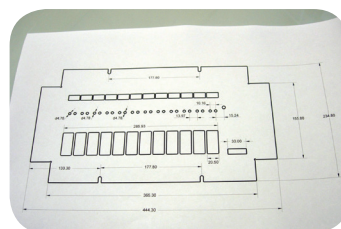
**To find out more information about the Planar and how it can help your business; please download our online brochure and contact our sales team at [sales@inspecvision.com](mailto:sales@inspecvision.com).**

REVERSE  
ENGINEERING



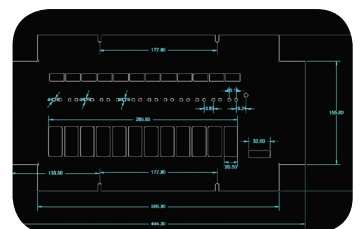
MEASURE COMPONENT

or



SKETCH

>



CAD FILE