

Customer Case Study

Company Profile

Company: Frantzen Discomatic GmbH

Location: Remscheid, Germany

Machine: Planar P70.20



Frantzen Discomatic is a family business, owned and operated by Markus and Kristina Schulz. Founded in 1893 by Mrs Schulz's great-grandfather as a tool company to manufacture saws, the company later diversified into special tools for various industrial sectors ranging from precision mechanics for watches, to armament and space technology.

Today, Frantzen is active in all production areas, including laser and forming processes. Specialising in discs which are used for wear parts in the grinding process, raw materials are primarily plastic and steel. The discs are used in industries for grinding, fine grinding and lapping and exported worldwide.

Some years ago, the company invested in a TRUMPF TruLaser 3030 as approximately 50% of the parts they manufacture are laser cut. When asked why they chose TRUMPF, Mr. Schulz replied "It wasn't the cheapest, but the best and that has proven to be true. It's a very reliable machine and customer service is outstanding -there's immediate help available anytime."



Figure 1: Employee producing laser cut parts.

The TRUMPF TruLaser was key to improving production efficiency and the quality of the parts produced however, Frantzen were using calipers and other manual measuring devices to inspect their parts. They found that not only was the method time-consuming, but they were often

"I would buy it again every time. I wish we had bought it sooner. It would have saved us years of messing around with calipers and quality problems."

Markus Schulz, Managing Director, Frantzen Discomatic GmbH

just measuring one hole and not the whole part. They needed a solution which would save time and eliminate human error. They saw the InspecVision Planar machine at Euroblech, the international sheet metal working technology exhibition which takes place in Hannover, Germany. Learning that InspecVision is also a TRUMPF Partner with demo machines installed in the TRUMPF Smart Factories in Ditzingen and Chicago gave them further assurance in the capability of the system. After a rigorous testing process they decided to invest.



Figure 2: Disc being placed on Planar system for inspection.

Markus Schulz, Managing Director at Frantzen Discomatic explained that "we want to make sure we always send correct parts to our customers and therefore we want to check them after they have been cut."

Typically, Frantzen Discomatic use the machine at least twenty times a day, checking between 100 and 130 parts per week. The production operators use the machine and Mr. Schulz commented that his employees have no problem using it and find it "a walk in the park!" So much so, that the company is now inspecting 200% more parts than before installing the Planar.

He said the support they received from InspecVision was

“...just great. We really appreciate it” and the machine “rarely requires maintenance”. He would “absolutely” recommend InspecVision to other companies.

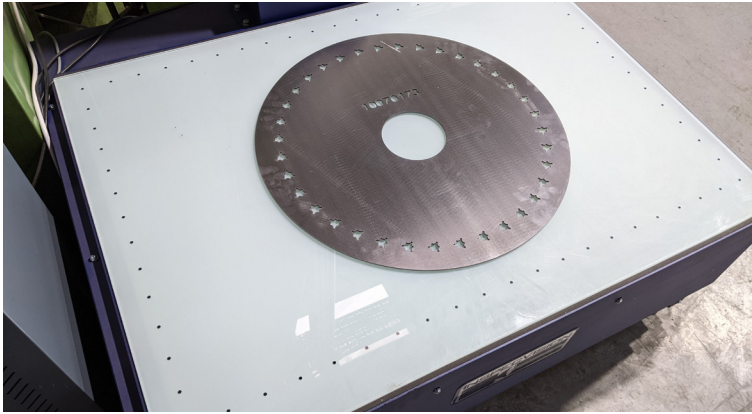


Figure 3: Part ready for inspection on the Planar P70.20

To find out more information about the Planar and how it can help your business; please download our online brochure and contact our sales team at sales@inspecvision.com.



Figure 4: Markus Schulz (left) and a member of staff at Frantzen Discomatic inspecting a laser cut part on the P70.20

“We want to make sure we always send correct parts to our customers and therefore we want to check them after they have been cut. ”

Markus Schulz, Managing Director, Frantzen Discomatic GmbH



InspecVision Ltd.
10 Trench Road • Mallusk • Newtownabbey • Co Antrim • BT36 4TY
Tel: +44 (0)28 9084 4012 • Fax: +44 (0)870 706 16 14
Email: sales@inspecvision.com • Web: www.inspecvision.com